



# JDV8035 Quick Reference Guide

## Basic Operation

### PANEL RELEASE:

Press to remove control panel.

### MODE:

With each press of the button the radio will change through the following modes: TUNER, DVD, CARD (SD/MMC CARD, AV IN-1).

### ENCODER KNOB:

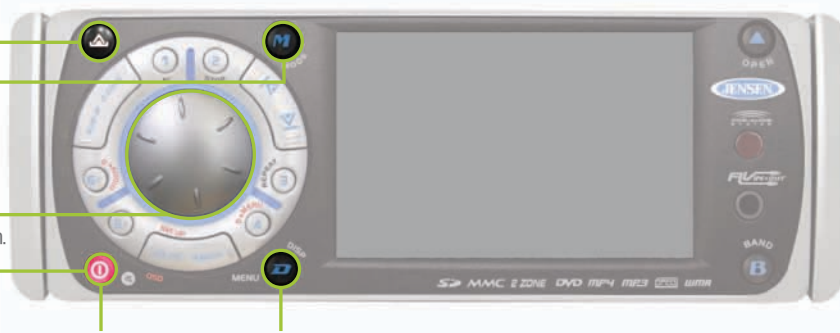
Use to adjust desired menu item.

### Power On/Off:

Press and hold to turn power ON or OFF.

**MUTE:** Press to MUTE audio.

**MENU:** Press and hold to access MENU FUNCTION LIST. With each continuous press of the button choose from the following menu items: ANGLE, CONTRAST, BRIGHTNESS, COLOR, DATE SET, CLOCK, TIME FORM, AV JACK, TUNER SET, TUNER AREA, BEEP TONE, PROGRAMMABLE TURN-ON VOLUME, REAR SPEAKER ON/OFF, INTER AMPLIFIER ON/OFF. Use ENCODER KNOB to adjust desired menu item.



## AM/FM Tuner Controls

**TUNE:** Press > to tune UP in frequency. Press < to tune DOWN in frequency. Press and hold to fast search.

### STATION STORE

**BUTTONS:** Press & hold to store current channel playing. Momentarily press to recall stored channel. NOTE: you can store up to 30 channels (6 channels per band FM1, FM2, FM3, AM1, AM2).

**AS/PS:** Press to SCAN through currently stored presets. Press & hold to STORE strongest broadcast stations in your area.



**BAND:** Press to select FM BAND and AM BAND.

## Audio Controls

**2-ZONE:** Press to turn 2-ZONE ON or OFF.

**SUB-W:** Press to turn SUB-W ON or OFF.

**AUDIO MENU:** Press to access AUDIO MENU. Continue to press until desired menu item appears. Adjust desired menu item with ENCODER KNOB.

**iX BASS:** Press to turn iX BASS ON or OFF.



## CD Player Controls

**PAUSE:** Press to PAUSE current audio.

**STOP:** Press to STOP current audio.

**TUNE/TRK:** Press to tune to next track. Press and hold to FAST FORWARD or REWIND current track playing.

**REPEAT:** Press to REPEAT current playing track. Press to release function.

**OPEN/EJECT:** Press to OPEN faceplate and insert CD. Faceplate will automatically close after CD is inserted. Press again to EJECT CD. Faceplate will automatically open when CD is ejecting and close when CD is taken out.



\*Supports MP3 and WMA File Formats.

## DVD Player Controls

**PLAY/PAUSE:** Press to PLAY current audio. Press to PAUSE current audio.  
**STOP:** Press to STOP current audio.  
**TUNE/TRK:** Press > to SKIP FORWARD to next chapter. Press < to SKIP BACKWARD to previous chapter. Press and hold to FAST FORWARD or REWIND current play.



**REPEAT:** Press to REPEAT current playing track. Press to release function.

**OPEN/EJECT:** Press to OPEN faceplate and insert DVD. Faceplate will automatically close after DVD is inserted. Press again to EJECT DVD. Faceplate will automatically open when DVD is ejecting and close when DVD is taken out.

## Clock/Date/Time Form Settings

**DATE SET:** Rotate knob CLOCKWISE or COUNTERCLOCKWISE to adjust DATE, MONTH, and YEAR.

**TIME FORM SET:** Rotate knob CLOCKWISE or COUNTERCLOCKWISE to choose TIME FORMAT between 12 HOURS and 24 HOURS.

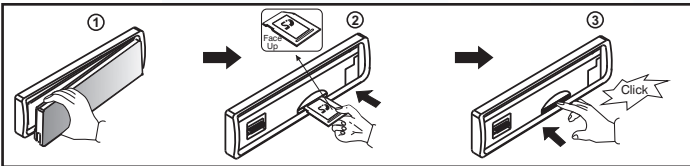
**CLOCK SET:** Rotate knob CLOCKWISE or COUNTERCLOCKWISE to INCREASE or DECREASE the HOUR. Press ENCODER KNOB to set the hour. Rotate knob CLOCKWISE or COUNTERCLOCKWISE to INCREASE or DECREASE the MINUTES. Press ENCODER KNOB to set the minutes.



**DISP/MENU:** Press to and hold to enter CLOCK, DATE, and TIME FORM SETTING MODES.

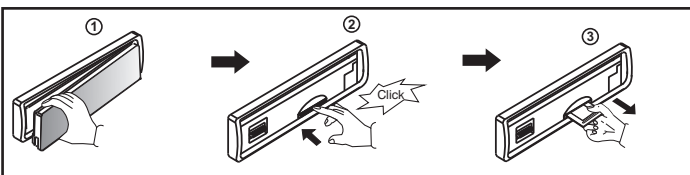
## Memory Card Controls

**PANEL RELEASE:** Press to remove control panel.



### Inserting the SD or MMC Card

1. Detach the Front Panel.
2. Insert the Memory Card with label side up.
3. Push in till you hear a "click".



### Removing the SD or MMC Card

1. Detach the Front Panel.
2. Push in till you hear a "click".
3. Remove the Memory Card.

\*Supports SD, MMC, MP3, MP4, JPEG, WMA.